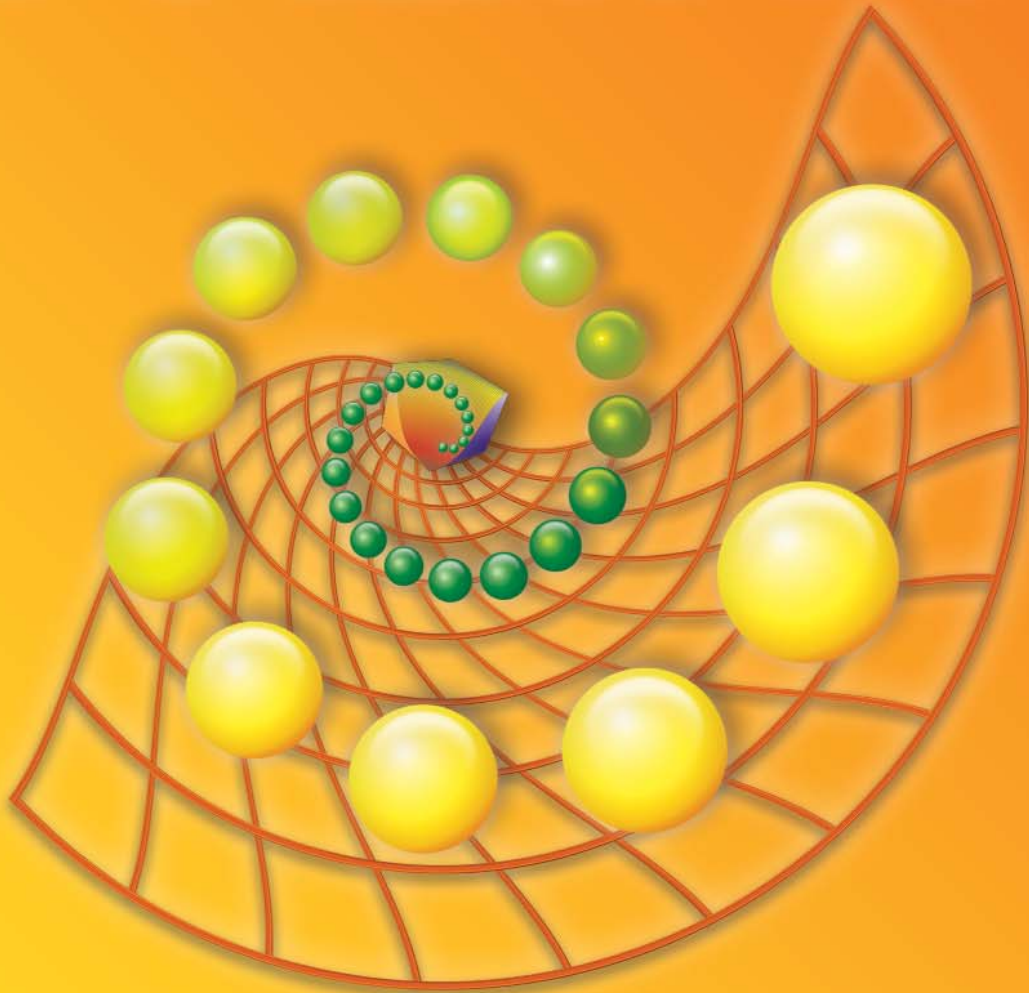


ReliaSoft

Presents...



ALTA[®] 7



ReliaSoft



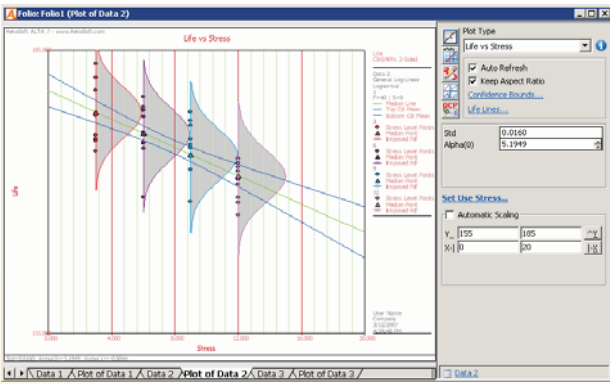
Reliability Office



ALTA[®] 7



The first, and still the only, commercially available software package designed expressly for quantitative accelerated life testing data analysis, ReliaSoft's ALTA provides an intuitive and user-friendly way to utilize tremendously complex and powerful mathematical models. The software is available in two versions: **ALTA Standard** provides the life-stress relationships required to analyze accelerated life test data with 1 or 2 constant stresses. **ALTA PRO** offers the advanced statistical modeling power to analyze data with up to 8 simultaneous stress types where stress is constant or varies with time!



When you implement quantitative accelerated life testing techniques and use the ALTA software for analysis, you can significantly **reduce test times, resulting in faster time to market, lower product development costs and lower warranty costs, as well as other benefits.**

Number in State	Last Inspected	State End Time	Temperature K
1	3700	3850	393
2	4300	4340	393
3	4700	4760	393
4	5300	5320	393
5	5700	5740	393
6	6000	6160	393
7	6400	6580	393
8	7100	7140	393
9	7800	7980	393
10	8500	8960	393
11	3100	3300	408

Stress Level	Units on Test	Portion Units to	
Low Stress Level	77.5404	0.6040	21.1
Middle Stress Level	94.2127	0.2807	30
High Stress Level	120	0.1409	15



ReliaSoft[®]

Quantitative Accelerated Life Testing (QALT)

In quantitative accelerated life testing, the stresses that cause product failure are accelerated under controlled conditions to cause the product to fail in a shorter period of time without introducing failure mechanisms that would not occur under normal use conditions. You can then apply mathematical models to extrapolate to use-level conditions and use this analysis to estimate reliability, mean life, failure rate and other performance measures for the product. This powerful analysis capability can help to *significantly reduce test times* and thereby achieve a host of related benefits.

ALTA Software for QALT Data Analysis

ReliaSoft's **ALTA** software provides full support for the analysis of data obtained from quantitative accelerated life tests. The software is available in two versions: **ALTA Standard** is intended as an entry-level tool for the reliability professional interested in basic quantitative accelerated life testing data analysis applications. **ALTA PRO** provides advanced capabilities made possible by extensive research and development in complex quantitative accelerated life testing data analysis techniques. Key features and capabilities are listed below (some are available only in ALTA PRO).

Data Types: ALTA's data entry spreadsheets support Complete, Right Censored (Suspended), Interval or Left Censored data, entered individually and in groups -- with up to 8 stress types (depending on the life-stress model). In addition, the Monte Carlo utility provides randomly generated data sets based on a specified model, distribution and parameters.

Distributions and Life-Stress Relationships: ALTA supports data analysis with the Weibull, Lognormal and Exponential distributions combined with the following life-stress relationships: Arrhenius, Eyring, Inverse Power Law, Temperature-Humidity and Temperature-NonThermal. ALTA PRO supports additional multi-stress and time-varying stress models, including Generalized Eyring, Proportional Hazards, General Log-Linear (with user-defined transformations) and Cumulative Damage.

Time-Varying Stress Profiles: In ALTA PRO, you can define stress profiles that vary with time, such as step-stress, ramp-stress, etc. Enhanced in Version 7, the Cumulative Damage model now supports analysis of data with *multiple* time-varying stresses!

Parameter Estimation and Calculated Results: ALTA uses Maximum Likelihood Estimation (MLE) for parameter estimation. The QCP and Function Wizard quickly return calculated results based on the data analysis and your inputs (such as reliability given time, mean life, acceleration factor, BX life, etc.). Confidence bounds are available for all calculated results and parameters.

Unparalleled Plotting Capabilities: ALTA automatically generates a complete array of two-dimensional and three-dimensional plots, with customizable plot settings. This includes Probability, Reliability vs. Time, *pdf*, Life vs. Stress, Acceleration Factor vs. Stress, etc. Plots are metafile graphics that can easily be annotated and used in your own reports.

Accelerated Test Planning Utility:

A new utility implements the complex mathematical models required to design an effective accelerated life testing plan, which recommends the appropriate allocation of sample units to be tested at each stress level.

Degradation Analysis and Other Tools:

ALTA provides a collection of utilities for related analyses, such as degradation analysis, tests of comparison, likelihood ratio tests, commonly used statistical functions, and others. The software also provides flexible spreadsheet-based tools for custom analysis and reporting.

Version 7 provides a completely updated user interface and many new and enhanced features, including:

More Data Types

- Interval Censored
- Left Censored

More Degradation Models

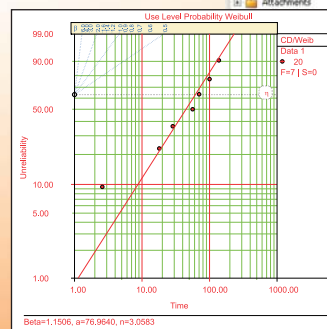
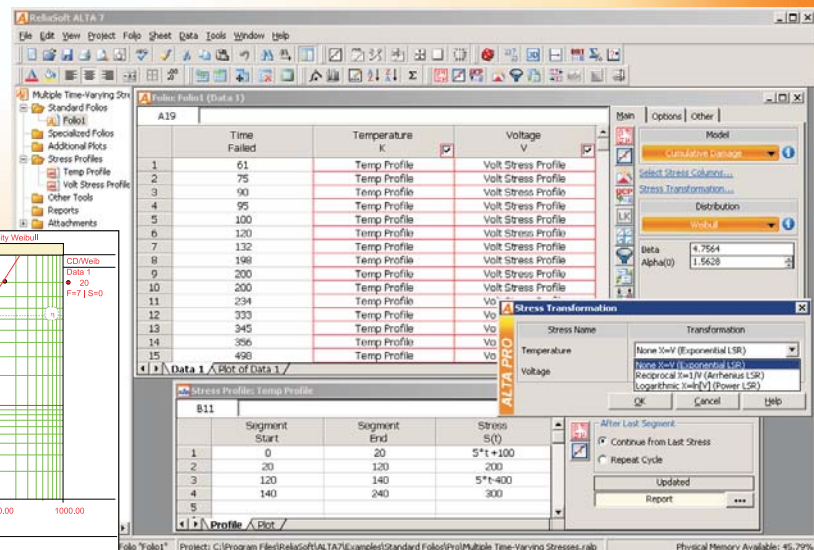
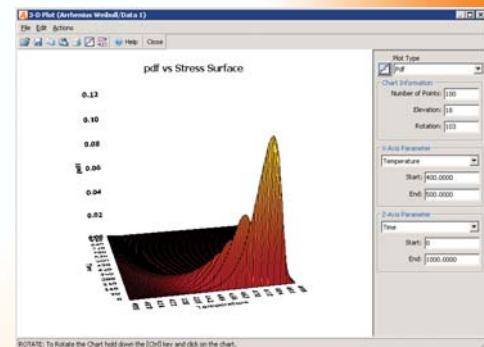
- Gompertz
- Lloyd-Lipow

Expanded Life-Stress Models

- Generalized Eyring
- Cumulative Damage model now supports *multiple* time-varying stresses

Accelerated Test Planning

Template-Based Report Generator





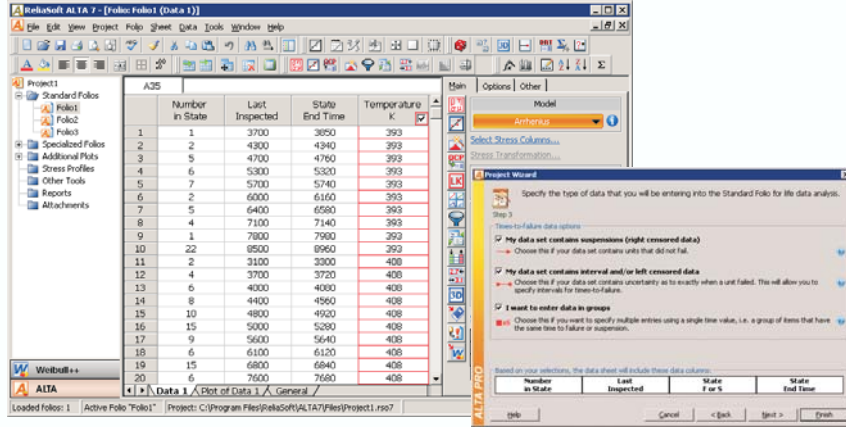
Support for a complete array of data types...

- Complete
- Right Censored (Suspended)
- Interval Censored
- Left Censored

...Entered individually or in groups

Intuitive, Flexible and Highly Integrated Work Environment

ALTA provides an intuitive, flexible and highly integrated work environment designed around the data folio (similar to an Excel® worksheet). In Version 7, the interface has been enhanced to allow you to manage multiple analysis folios and related information all together in a single file using a hierarchical (tree) view to view and manage resources. At the same time, the new work environment “stays true to its roots” so that users who are familiar with previous versions of the software will be able to enter and analyze data in much the same way as always. With the release of Version 7, ALTA is now more tightly integrated with ReliaSoft’s **Weibull++** life data analysis software than ever before. You can now save Weibull++ and ALTA analyses together in the same file and switch between the two product interfaces with the click of a button.



Support for a Variety of Data Types - Enhanced in Version 7!

ALTA is designed for use with complete, right censored (suspended), interval and/or left censored data; and data can be entered individually or in groups. A flexible wizard guides you through the process of selecting the appropriate data entry sheet to fit your needs and you can use the Alter Data Type command to adjust the columns supported by the spreadsheet on-the-fly, if necessary.

Available Life-Stress Relationships

ALTA Standard gives you a choice of the following life-stress models:

- **Arrhenius**: a single stress model that is typically used for the analysis of data from temperature tests.
- **Eyring**: a single stress model that is typically used for the analysis of data from temperature or humidity tests.
- **Inverse Power Law (IPL)**: a single stress model that is typically used for the analysis of data from tests with non-thermal stresses, such as vibration, voltage or temperature cycling.
- **Temperature-Humidity**: a variation of the Eyring relationship that can be used for the analysis of data from temperature and humidity tests.
- **Temperature-Nonthermal**: a combination of the Arrhenius and IPL relationships that can be used for the analysis of data from tests with two stresses, such as temperature and voltage.

In addition, **ALTA PRO** offers four additional models for more advanced applications:

- **Generalized Eyring**: used when temperature and a second non-thermal stress (typically voltage) are the acceleration variables. - **New in Version 7!**
- **Proportional Hazards**: analyzes data with up to 8 stress types using the exponential relation. It also allows the use of zero as a stress value, which enables the analysis of data with indicator variables (e.g. on/off or continuous operation).
- **General Log-Linear**: the most general model, which supports the analysis of data with up to 8 stress types and provides the flexibility of specifying the life-stress relation for each stress (such as Arrhenius and Inverse Power) with the use of transformations.
- **Cumulative Damage**: analyzes data with stresses that vary with time. The model now supports *multiple* time-dependent stresses. - **Enhanced in Version 7!**

Available Life-Stress Relationships and Distributions

ALTA Standard supports:

- Arrhenius
- Eyring
- Inverse Power Law
- Temperature-Humidity
- Temperature-Nonthermal

ALTA PRO also provides:

- Generalized Eyring
- Proportional Hazards
- General Log-Linear
- Cumulative Damage

Both versions offer a choice of distributions to describe normal use conditions:

- Weibull
- Lognormal
- Exponential



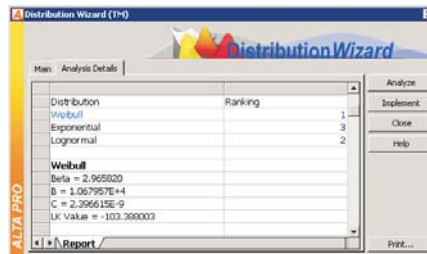
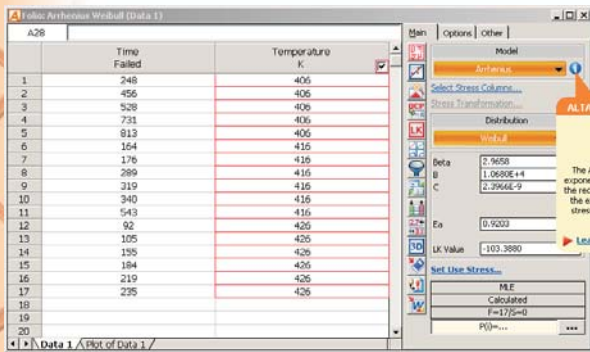
Extrapolate to Normal Use Conditions

To “describe” the product’s expected behavior at normal use conditions, you can select to solve any of the available life-stress relationships combined with an underlying Weibull, Exponential or Lognormal lifetime distribution. Maximum Likelihood Estimation (MLE) is used for all parameter calculations.

Not sure which model to use to analyze your data?

Theory Help is available to help you better understand how ALTA works and how its analysis capabilities apply to your data sets. Simply click the help button next to the analysis option that you are considering and a window will appear with a brief overview of the principles and theory behind your selection. More in-depth explanations are available in the theoretical textbook and help file that are included with the software.

Of course, you can always rely on ReliaSoft’s **Distribution Wizard** to help you determine the best lifetime distribution for your current data set. The Wizard estimates the parameters for each of the selected distributions and compares the log-likelihood values, then recommends the one that best fits your data.



Advanced analysis capabilities supported only in ALTA PRO:

- Life-Stress Models:**
- Generalized Eyring
 - Proportional Hazards
 - General Log-Linear
 - Cumulative Damage

Analyze More Than 2 Stress Types

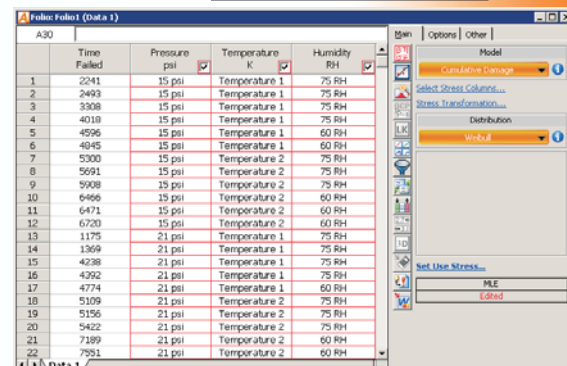
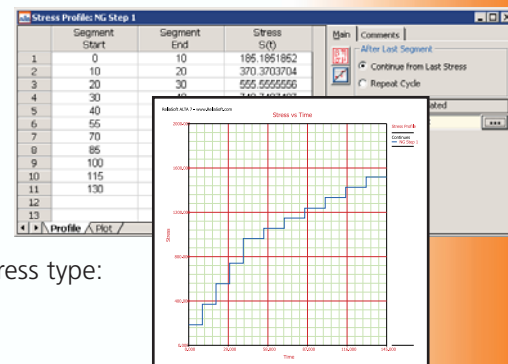
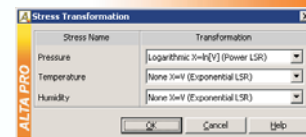
Time-Varying Stress Profiles

Analyze Data with Indicator Variables

Flexible Support for a Variety of Stress Applications

ALTA provides a complete set of options to describe the stress(es) that were applied during your accelerated life tests so that they can be handled appropriately by the analysis. Capabilities include:

- **Set and Display the Use Stress Level:** The stress level for normal use conditions is easy to set and readily visible within the analysis and plots.
- **Define One, Two or More Stress Columns in Data Sheets:** Easily add or remove stress columns from your data entry sheets and customize the column headings to fit the testing scenario. ALTA Standard provides one and two-stress models while ALTA PRO can handle data with up to 8 stresses!
- **Specify the Stress Transformation:** With ALTA PRO’s General Log-Linear and Cumulative Damage models, you have the option to select a transformation (i.e. set the life-stress relationship) for each stress type:
 - None X=V (Exponential)
 - Reciprocal X=1/V (Arrhenius LSR)
 - Logarithmic X=ln[V] (Power LSR)
- **Time-Dependent Stress Profiles:** In ALTA PRO, you can use the Cumulative Damage model to analyze data where the stress applied during the test and/or the anticipated use stress level will vary with time. ALTA provides an intuitive interface to allow you to define and manage stress profiles and makes it easy to assign these profiles as needed within your data sheets. The stress level assigned to each “segment” in the profile can be a constant value or defined as a function of time, which gives you enormous flexibility to define step-stress, ramp-stress or any other quantifiable stress profile.





QCP calculates...

- Reliability
- Probability of Failure
- Mean Life
- Warranty Time
- B(X) Information
- Acceleration Factor (AF)
- Failure Rate

...with confidence bounds!



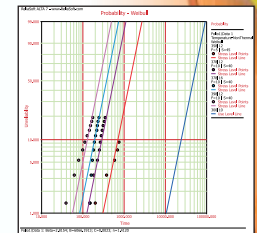
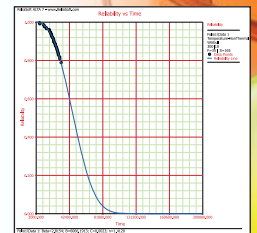
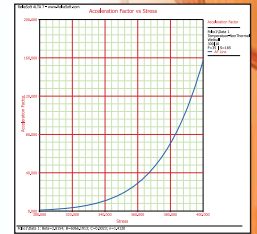
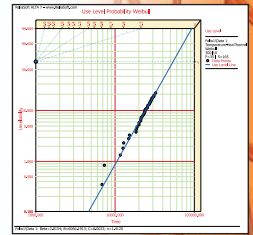
QCP Provides Useful Reliability Metrics in a Mouse-Click

ReliaSoft's Quick Calculation Pad (QCP) provides a quick, easy and accurate way for you to obtain results for the most frequently asked reliability questions, such as the mean life, warranty time, BX information, acceleration factor and more. All QCP results can be displayed and manipulated in ALTA's Result Panel and/or flexible general spreadsheets. In addition, you have the option to keep the utility open while you return to the current data folio to make modifications or change data sets and then continue to perform QCP calculations.

Unparalleled Plots and Graphs to Showcase Your Analyses!

ALTA makes it easy to create a complete array of two-dimensional and three-dimensional plots to present your analysis graphically. This includes:

- **Probability plots** represent the product's behavior under each of the accelerated stress conditions and the expected behavior under normal use conditions.
- **Reliability, Unreliability and Failure Rate plots** show key metrics vs. time (2-dimensional) or vs. time and stress (3-dimensional).
- **pdf plots** provide a good way to visualize the characteristics of the use-level distribution (2D and 3D plots are available).
- **Life vs. Stress plots** show applicable life measures (e.g. Eta, Mean Life, etc.) plotted against stress (2D) or vs. stress and time (3D). In the two-dimensional plot, you also have the option to superimpose the pdf for each stress level.
- **Standard Deviation (Std) and Acceleration Factor (AF) vs. Stress plots** provide information about the spread of the data (Std) and the acceleration factor (AF) at each stress level.
- **Residuals plots** can be used to determine the adequacy of the model for a particular data set. Depending on the analysis, three types of plots are available: Standardized Residuals, Cox-Snell Residuals and Standardized vs. Fitted Values.



An extensive selection of two-dimensional and three-dimensional plots...

2D Plots

- Probability
- Reliability vs. Time
- Unreliability vs. Time
- pdf
- Failure Rate vs. Time
- Life vs. Stress
- Std vs. Stress
- AF vs. Stress
- Residuals

3D Plots

- Likelihood Function
- pdf vs. Time, Stress
- Failure Rate vs. Time, Stress
- Reliability vs. Time, Stress
- Unreliability vs. Time, Stress

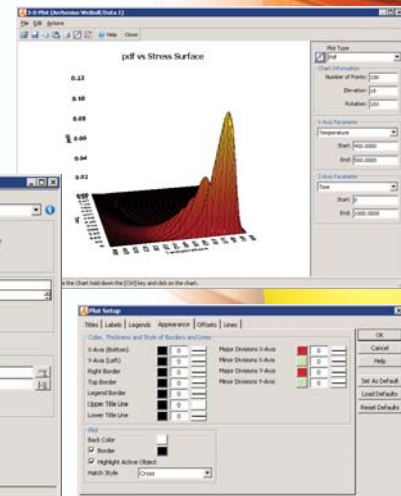
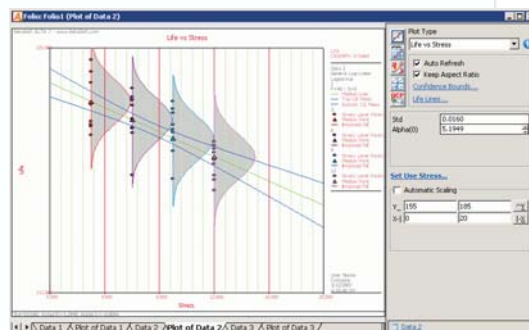
Some special plotting features include:

- Option to plot confidence bounds on Time (Type I) or Reliability (Type II) for applicable plots.
- Option to plot some or all stress levels in a single plot.
- Option to specify one stress as varied while the others are held constant in life vs. stress and other plots.
- Option to represent suspension data points on plots as well as the number in a group for grouped data.
- Option to set and show the target reliability on plots.

Customize and Annotate Plots

The Plot Setup makes it easy to completely customize the "look and feel" of the plot graphics that you generate by adjusting font sizes, setting line colors and thickness, etc.

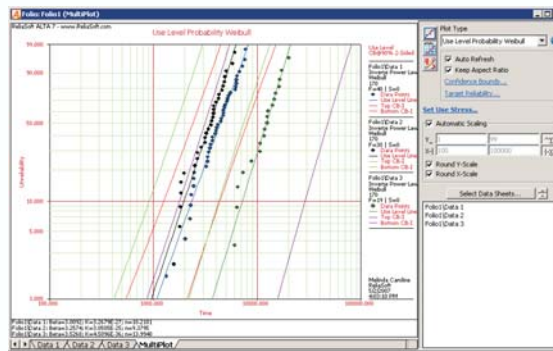
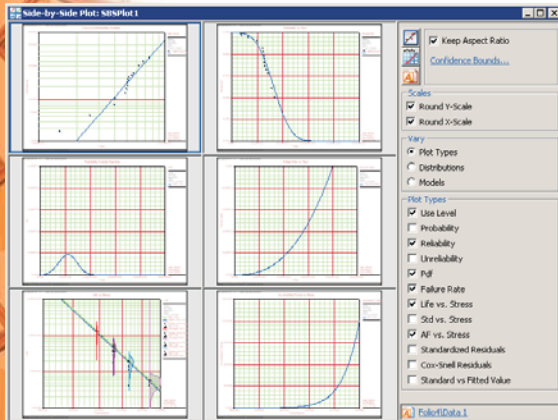
In addition, the RS Draw integrated metafile graphics editor provides the ability to insert text, draw objects, mark particular points or paste other images into your plots. You can then save them as metafile graphics for easy use in other Windows® applications.



MultiPlot Sheets and Side-by-Side Plots Utility

ALTA's MultiPlot feature makes it easy to compare analyses by automatically plotting the results for multiple data sets together in the same plot. This can be useful, for example, when you wish to compare results for different versions of the design, for different suppliers, for alternative use-stress levels, and so on.

The **Side-by-Side Plots** utility allows you to view (and print) multiple plots for a given data set side-by-side. For example, you may want to show the probability, reliability, *pdf* and failure rate plots for a given analysis together in the same window. Alternatively, you may wish to compare the probability or *pdf* plots for a given data set when analyzed with different life-stress models or distributions. Simply select the combination that meets your analysis and/or reporting needs.



Advanced plotting tools include:

- **Plot Setup:** Customize the "look and feel" of your plots
- **RS Draw:** Edit and annotate plots as metafile graphics
- **MultiPlot:** Show multiple data sets in the same plot
- **Side-by-Side Plots:** Show up to 12 plots at a time in a single window

Use Spreadsheets for Custom Analyses - Enhanced in Version 7!

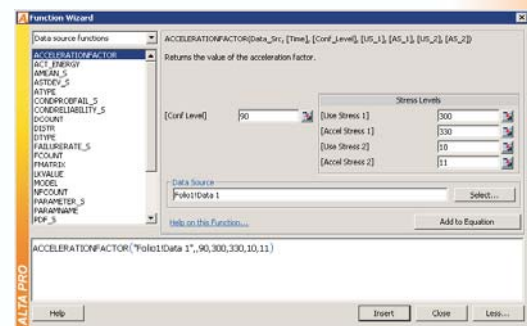
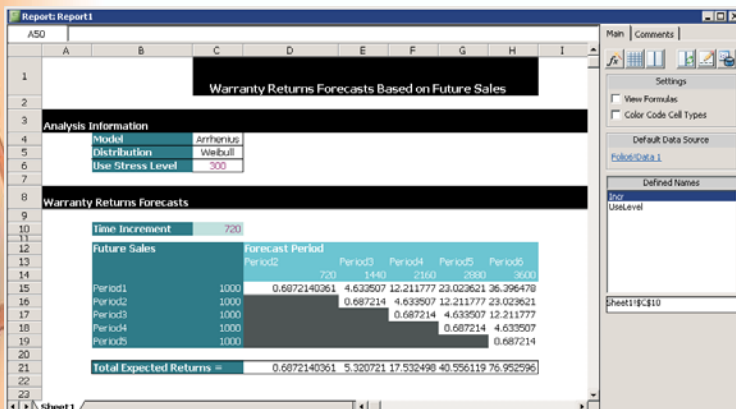
ALTA's General Spreadsheets can be used just like an Excel® worksheet to perform your own customized analyses. These spreadsheets provide complete in-cell formula support, cell references, over 140 built-in functions and integration with the Function Wizard and the Chart Wizard.

You can use the **Function Wizard** to insert a wide array of calculated results based on your inputs and, when applicable, a referenced data sheet. Available results range from basic math/statistical functions to common reliability analysis results, and much more. Now in Version 7, this works more like Excel® functions, with the ability to type functions directly into cells and results that are updated automatically when the inputs change. The **Chart Wizard** leads you through a step-by-step process to create and configure your own custom chart graphics based on a selected data set.

Intuitive spreadsheet-based interfaces for custom analyses and reports.

Template-Based Report Generator - New in Version 7!

The Report Wizard utility allows you to design print-ready reports to showcase your analyses. The template feature makes it easy to apply the same report format to different analyses. This utility has been revised and enhanced in Version 7 and now provides an intuitive spreadsheet-based interface for creating and formatting reports.





Generate accelerated test plans based on your inputs for:

- Stress Levels
- Unreliability Criterion
- Lifetime Distribution
- Units on Test (optional)
- Test Duration
- Probability of Failure

Models for planning single-stress tests include:

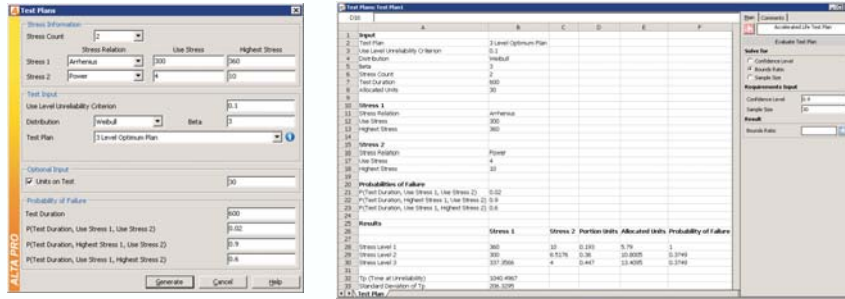
- 2 Level Statistically Optimum
- 3 Level Best Standard
- 3 Level Best Compromise
- 3 Level Best Equal Expected Number Failing
- 3 Level 4:2:1 Allocation

And for two stresses:

- 3 Level Optimum
- 5 Level Best Compromise

Create Optimal Accelerated Life Testing Plans - New in Version 7

Poorly designed accelerated test plans waste time, effort and money and may not even yield the desired information about your product. Before starting an accelerated test (which is sometimes an expensive and difficult endeavor), it is advisable to have a plan that helps in accurately estimating reliability at operating conditions while minimizing test time and costs. A test plan should be used to decide on the appropriate stress levels that should be used for each stress type and the proportion of the test units that need to be allocated to the different stress levels. With the release of Version 7, **ALTA** now provides a flexible utility that implements the complex mathematical models required to design an effective accelerated life testing plan that will yield the closest possible estimate for product life at the percentile and use stress level that you specify. Simply select a model, make the required inputs and click a button to generate a complete report that presents the appropriate allocation of test units to each stress level along with other useful information to support your test planning decisions.



Degradation Analysis - Enhanced in Version 7

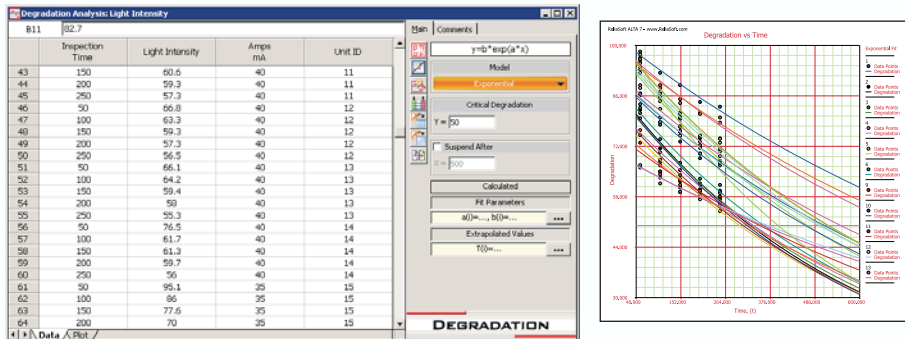
The Degradation Analysis utility allows you to extrapolate the failure time of a product based on its performance (or degradation) over a period of time under accelerated stress conditions. You can transfer the extrapolated failure times into a standard data sheet for further analysis. This utility also creates a plot of the analysis, which can help you to visualize the results. In addition to Linear, Exponential, Power and Logarithmic, Version 7 now supports the Gompertz and Lloyd-Lipow models.

Models available for degradation analysis:

- Linear
- Exponential
- Power
- Logarithmic

New in Version 7

- Gompertz
- Lloyd-Lipow



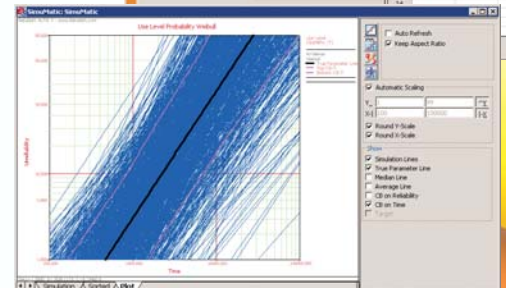
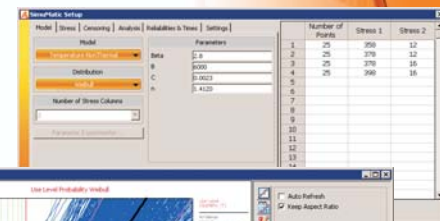
Monte Carlo Data Generator and SimuMatic®

ALTA's Monte Carlo data simulation utility allows you to randomly generate data sets based on the life-stress relationship, distribution, parameters and stress levels that you specify.

The **SimuMatic®** utility expands on this capability by allowing you to automatically perform specified reliability analyses on a large number of simulated data sets. This flexible tool can be applied in many different ways, such as helping you to a) investigate and better understand life data analysis concepts, b) experiment with the influences of sample sizes and censoring schemes on analysis methods, c) construct simulation-based confidence bounds, d) better understand the concepts behind confidence bounds and e) develop and evaluate accelerated life test designs. - **New in Version 7**

Use Monte Carlo simulation to:

- Generate data sets
- Construct and evaluate confidence bounds
- Develop and evaluate accelerated test designs
- And much more!





Tests of Comparison

The Comparison Wizard allows you to compare the times-to-failure from one data set to the times-to-failure of another data set. This provides another easy way to compare life distributions from alternate designs, alternate manufacturers, alternate assembly lines, etc.

QSR Frees You from Tedious Lookups in Tables

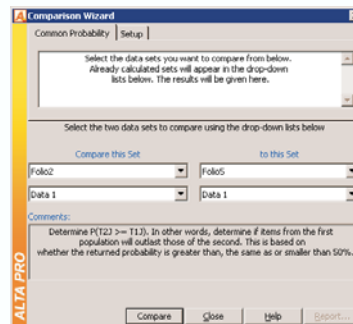
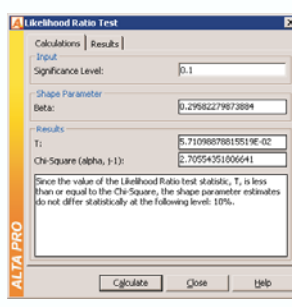
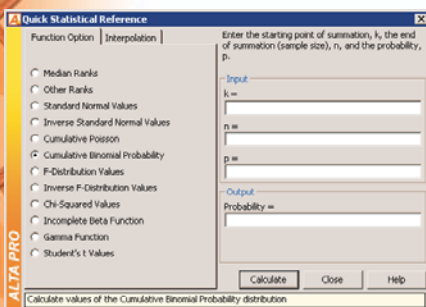
ALTA's Quick Statistical Reference (QSR) utility returns results for common statistical functions. This convenient utility provides values commonly found in lookup tables that may be needed for further custom analysis, such as Median Ranks, F-Distribution Values, Chi-Squared Values, etc.

Likelihood Ratio Tests

The Likelihood Ratio Test utility helps you to verify the appropriateness of the selected model for your data set by validating the consistency of the shape parameter (beta or standard deviation) across multiple stress levels for the currently calculated data set.

Additional statistical utilities include:

- Comparison Wizard**
- Likelihood Ratio Tests**
- QSR (Statistical Reference)**
 - Median Ranks
 - Other Ranks
 - Standard Normal Values and Inverse Standard Normal Values
 - Cumulative Poisson
 - Cumulative Binomial Probability
 - F-Distribution Values and Inverse F-Distribution Values
 - Chi-Squared Values
 - Incomplete Beta Function
 - Gamma Function
 - Student's t Values



Easy Imports from Other Projects and Data Files

ALTA's Import and Export Windows make it easy to transfer selected data sheets, plot sheets, spreadsheets, reports, stress profiles and other resources among projects. In addition, the File Import Wizard imports data from other types of files, including tab-delimited *.txt, comma-delimited *.csv, space-delimited *.prn, semicolon-delimited *.smc and Excel® *.xls files. The utility makes it easy to "map" the existing data to the columns supported in ALTA's data sheets. You can even save a "profile" that can be used to speed up the process when importing multiple files of the same type!

Integration with Weibull++ and Other Software - Enhanced in Version 7

With the release of Version 7, a single project file (*.rso7) can contain both ALTA and Weibull++ analysis folios and you can instantly switch back and forth between the two product interfaces. This means that it's now easier than ever to transfer data from ALTA to Weibull++ for additional analysis. You can also keep your Weibull++ analysis of field data together with the original QALT estimates, and much more. ReliaSoft also makes it easy to access ALTA's analysis results (i.e. use-level distribution and parameters) from within the BlockSim, RENO, Xfmea and/or RCM++ software.

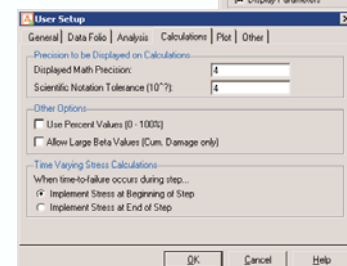
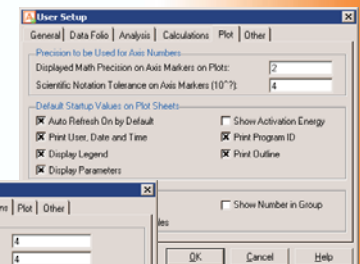
NOTE: Weibull++, BlockSim, RENO, Xfmea, RCM++ and/or Excel® must be installed and properly licensed on your computer to utilize the integration options described here.

Easy import from Excel® and other file types plus useful integrations with other ReliaSoft software:

- Weibull++
- BlockSim
- RENO
- Xfmea
- RCM++

Configure the Workspace to Meet Individual Needs

ALTA makes it easy to configure the interface and analysis settings to meet your specific preferences and needs. For example, the User Setup allows you to specify default options for data sheets, analysis settings, fonts/symbols, etc. The Plot Setup allows you to configure the appearance of the plots that are automatically generated by the software. In addition, you can customize the toolbars and/or adjust the appearance of the workspace by hiding/displaying or changing the position of the Project Explorer and other panels.





Is ALTA better than the package I am using now?

ABSOLUTELY. We invite you to try **ALTA** and compare it with any other package on the market. Evaluation software is available for download from our Web site at <http://Download.Reliasoft.com>.

What are the minimum system requirements?

Windows 2000, NT and XP. 433 MHz Intel Pentium class processor, or an AMD Opteron, AMD Athlon64 or AMD Athlon XP processor, with 32MB RAM (64MB or more is recommended), SVGA display and at least 80MB of hard disk space.

What languages are supported?

The **ALTA** interface is available in English, German, Portuguese, French, Spanish and Simplified Chinese. For details and to see if support for additional languages has been added in our most recent release, see <http://www.Reliasoft.com/multi-language.htm>.

Is technical support available?

ReliaSoft's software products are renowned for their ease of use and unparalleled after-sale support. We provide **FREE** technical support via phone, fax or e-mail through an established (and growing) network of regional offices and partners/distributors throughout the world. For details, see <http://www.Reliasoft.com/Support.htm>.

What other tools are available to help me master the software?

ALTA comes with complete and detailed printed product documentation and on-line help files, a training guide with step-by-step examples, a theoretical textbook and a multitude of example files designed to get you up and running the minute the application is installed.

ReliaSoft's training seminars provide instruction in reliability engineering principles and theory as well as the ReliaSoft software tools designed to put that theory into practice. Courses on **ALTA** and Quantitative Accelerated Life Testing Data Analysis are available. For details, see <http://Seminars.Reliasoft.com>.

How much does ALTA cost, how do I order, and when will it arrive?

Information about licenses and pricing is available at <http://ALTA.Reliasoft.com>. To order, use our Web store, print-ready order form or contact the ReliaSoft office nearest you (see Worldwide Directory at <http://www.Reliasoft.com/internat.htm>). We will process your order on the same business day that we receive it, with shipment via an express courier (2nd Day or International service). If requested and depending on your location, domestic orders can be shipped with Overnight service for delivery by the next business day. We also offer the option of immediate software downloads via the Web.

What other reliability software is available from ReliaSoft?

ReliaSoft's software products have become the industry standard for complete reliability analysis and are used worldwide by most manufacturers with an active quality/reliability engineering program. Complete product overviews are available on the Web at <http://www.Reliasoft.com>.

- **Weibull++** for life data analysis
- **BlockSim** for system reliability, maintainability and related analyses
- **RGA** for reliability growth analysis
- **RENO** for visual stochastic event simulation and risk analysis
- **Xfmea** for FMEA / FMECA analysis
- **RCM++** for reliability centered maintenance (RCM) analysis
- **MPC** for MSG-3 aircraft systems and powerplant analysis
- **XFRACAS** for FRACA/FRACAS activities
- **Lambda Predict** for standards based reliability predictions



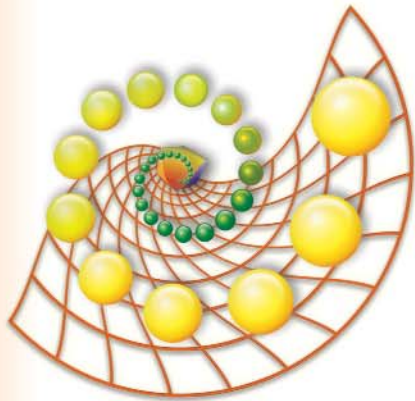
Detailed user documentation in printed manual and on-line help, theoretical reference, step-by-step training guide and numerous example projects are provided.

FREE technical support via phone, fax or e-mail.

Training seminars that combine theory and application are also available.

Try a free demonstration copy of ALTA and decide for yourself!

ReliaSoft®



ALTA® 7



ReliaSoft Corporation

Worldwide Headquarters, 1450 South Eastside Loop, Tucson, AZ 85710-6703

Phone: 1.888.886.0410 (Toll Free in U.S. and Canada) OR +1.520.886.0410, Fax: +1.520.886.0399

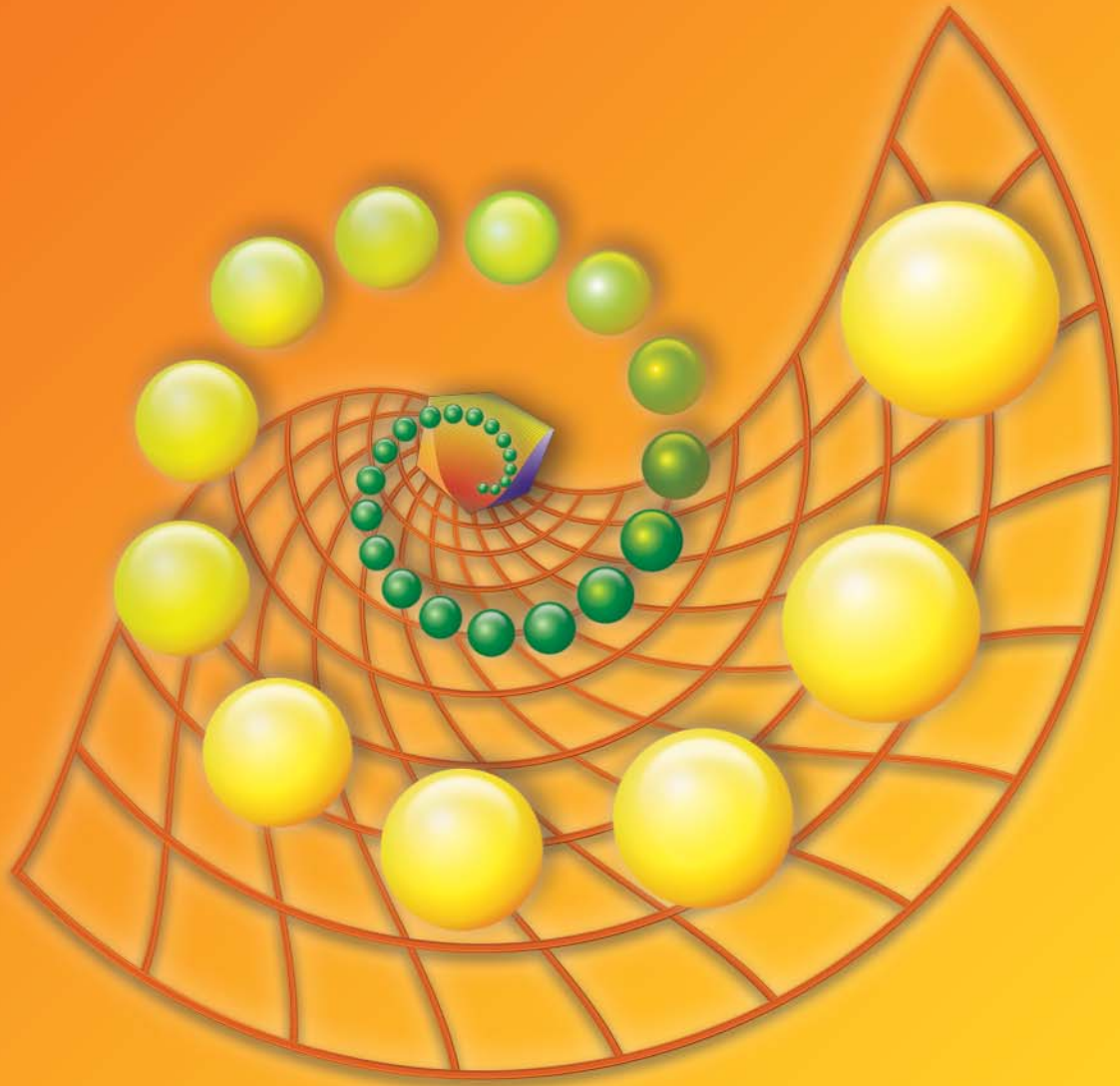
Or consult our Worldwide Directory at <http://www.Reliasoft.com/internat.htm>
to locate the ReliaSoft office nearest you.

<http://ALTA.Reliasoft.com>

ReliaSoft



Reliability Office



ReliaSoft[®]

<http://www.Reliasoft.com>

<http://ALTA.Reliasoft.com>