

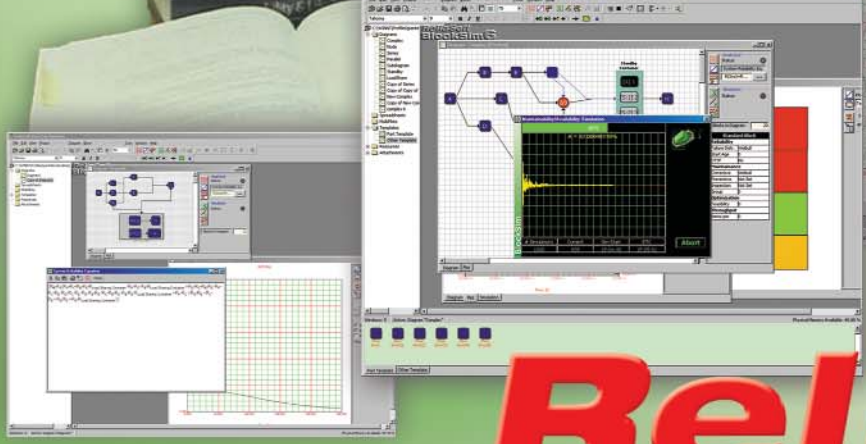
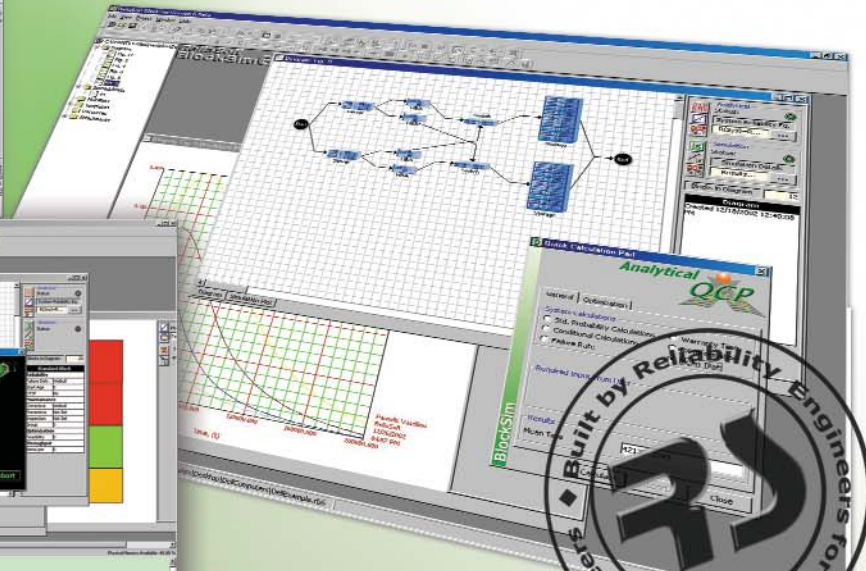
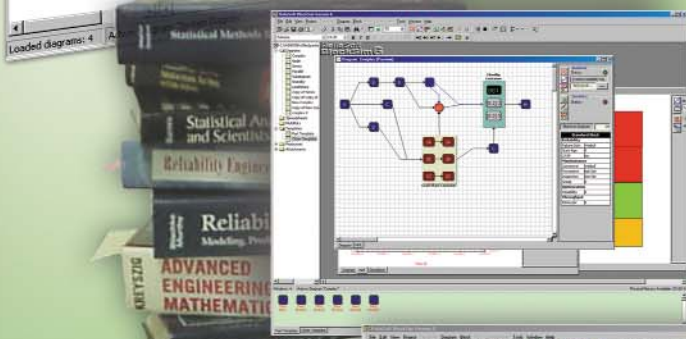
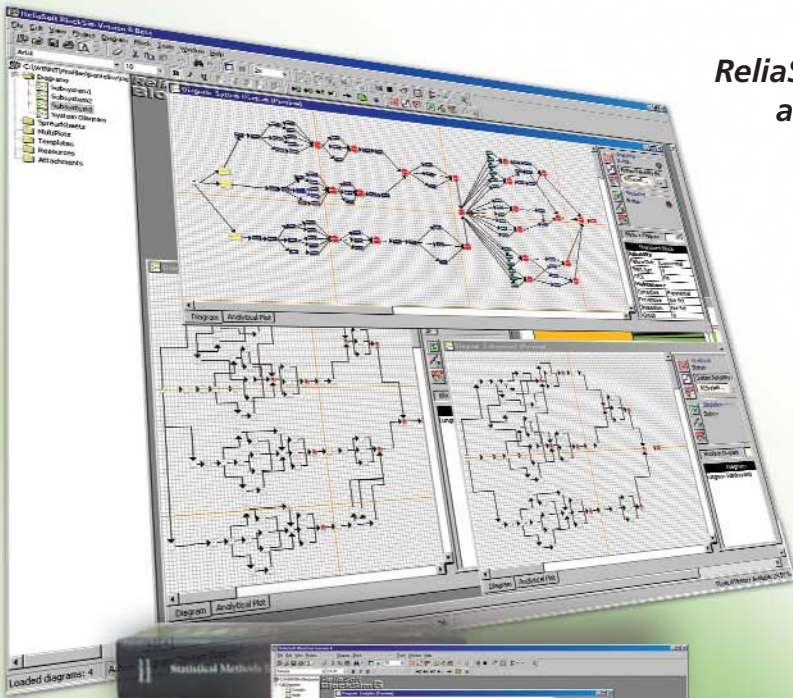


# Introducing the Ultimate System Visualization and Analysis Tool

# BlockSim Version 6

*ReliaSoft's scientists and engineers have worked alongside corporate partners and selected user groups to create the ultimate system visualization and analysis tool. The result of this effort is a monumental breakthrough encompassing astounding analytical power while maintaining an artful simplicity of use: **BlockSim 6**.*

*ReliaSoft's BlockSim software provides a comprehensive platform for complete system analysis utilizing reliability block diagrams (RBDs) for system definition and performs complex system analysis both analytically and through discrete event simulation.*



# ReliaSoft®

# Flexible Reliability Block Diagram (RBD) Creation

BlockSim's interface for Reliability Block Diagram creation is the most intuitive, flexible and polished in the industry.

- Simple drag-and-drop techniques allow you to build RBDs for the simplest to the most complex systems. Configuration options include **Series**, **Parallel**, and **k-out-of-n** (and in various complex combinations) *plus...*

**Load Sharing Blocks:** In a load sharing configuration, each block supports a percentage of the total load.

**Standby Blocks:** In a standby configuration, standby blocks are available to become active under specified circumstances.

**Mirrored and Multi Blocks:** Provide increased versatility with the ability to simulate bi-directional paths, save time/space when entering multiple identical blocks, and more...

- Unlimited subdiagram capability to **link diagrams** as components in other diagrams.
- Customizable graphical display** with the ability to export diagram graphics.
- Pre-defined **templates** and **import/export** to save time and ensure consistency, ability to de-activate individual blocks for "what-if" analyses, file attachments, and more...

# Exact Reliability Results/Plots and Optimum Reliability Allocation

- Using an exclusive algorithm pioneered by ReliaSoft, BlockSim algebraically computes the **exact system reliability function** for even the most complex systems so you can obtain **exact system reliability results**. Results include Reliability, Failure Rate, MTTF, Warranty Time, B(X) Life, *pdf* plots, Reliability Importance plots, and more...
- Also exclusively in BlockSim, you can enter cost and achievable reliability improvement information to determine the most **cost-effective component reliability allocation strategy** to meet a system reliability goal.

# Extensive Simulation Options for Analysis of Repairable Systems

BlockSim's simulation capability for maintainability and availability analysis of repairable systems is more sophisticated and realistic than ever.

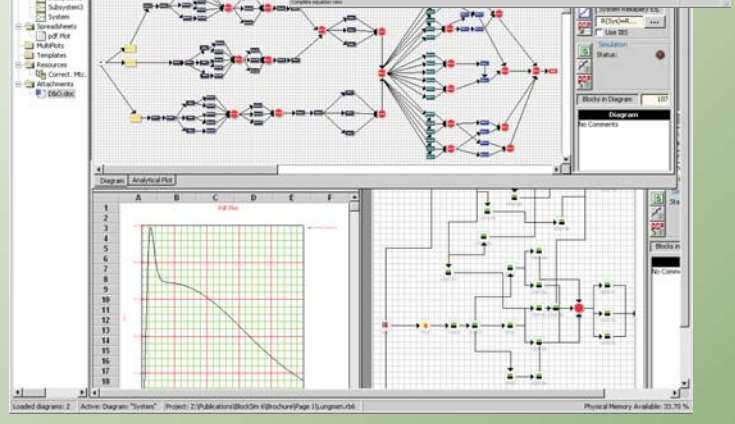
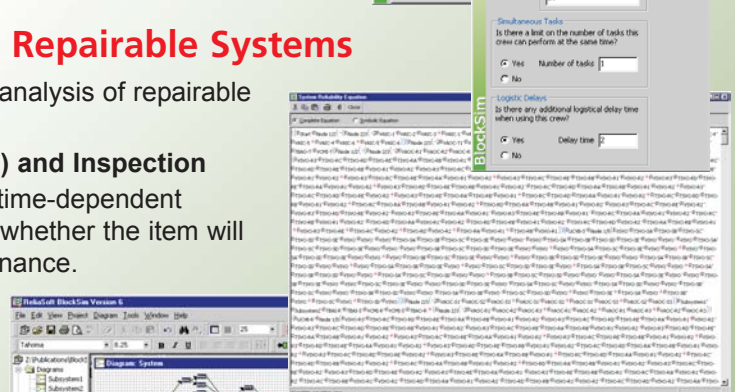
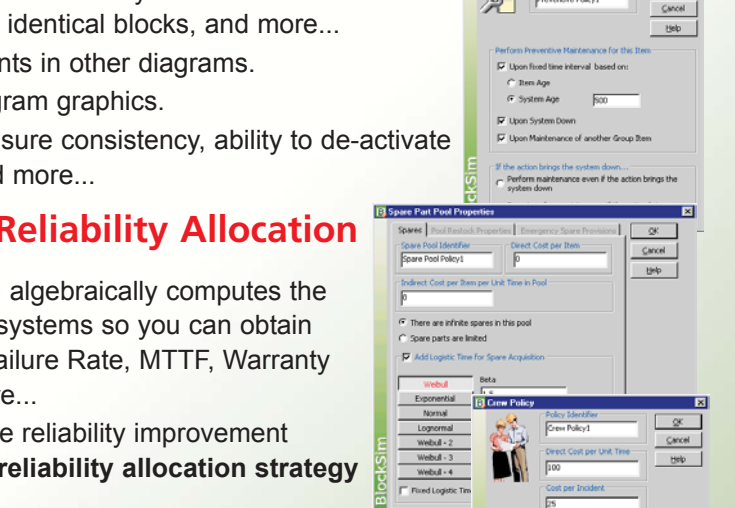
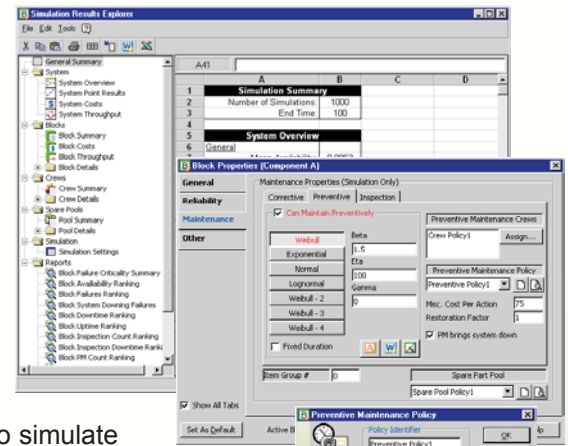
- Corrective Maintenance (CM), Preventive Maintenance (PM) and Inspection**

**Maintenance Duration and Restoration Factors:** Specify time-dependent distributions or fixed durations for maintenance actions and whether the item will be "good as new" or less than 100% restored by the maintenance.

**Maintenance Policies:** Describe the conditions under which maintenance will be performed (e.g. upon fixed interval, maintenance of another group item, etc.).

**Spare Parts Pools and Maintenance Crews:** Describe the conditions under which spare parts can be obtained and crews are available to perform maintenance, as well as the associated costs.

- Comprehensive Results and Plots:** Maintainability and availability results per system and/or per block including: Uptime, Downtime, Mean Time to First Failure (MTTF), Mean Availabilities, Point Availabilities, Point Reliabilities, Number of Failures, Number of PMs, Number of Inspections, Plots of System Uptime/Downtime, Point Availability vs. Time, Point Reliability vs. Time, and more...
- Plus: Life Cycle Cost summaries, Throughput estimations, Optimum PM time calculations, and more...**



**Minimum System Requirements:** Windows NT, 2000 or XP. Pentium class processor with 32MB RAM (64MB or more is recommended), SVGA display and at least 60MB of hard disk space.

**ReliaSoft**



**Reliability Office**

ReliaSoft Plaza \* 115 S. Sherwood Village Drive \* Tucson, Arizona 85710

Phone: +1.520.886.0410 \* Toll Free (U.S. and Canada): 1.888.886.0410 \* Fax: +1.520.886.0399 \* E-mail: Sales@ReliaSoft.com

<http://www.ReliaSoft.com> \* <http://www.weibull.com>

+1.520.886.0410

<http://BlockSim.ReliaSoft.com>