

ReliaSoft®

Presents...



RCM++

ReliaSoft



Reliability Office

RCM++

Putting the Reliability back into Reliability Centered Maintenance™

RCM++ facilitates analysis, data management and reporting for Reliability Centered Maintenance (RCM) analysis, with support for all of the major industry standards (such as ATA MSG-3, SAE JA1012 and NAVAIR 00-25-403) and extensive customization options.

The image displays several screenshots of the ReliaSoft RCM++ software interface. The top screenshot shows the 'Component: Equipment Selection' dialog box with a table for safety, detectability, operational, and economic criteria. The middle screenshot shows the 'Aircraft RCM (MSG-3)' project explorer and a detailed FMEA table for 'Engine Fire Detection'. The bottom screenshot shows the 'Maintenance Task Manager' window with a table of tasks and their associated costs and availability.

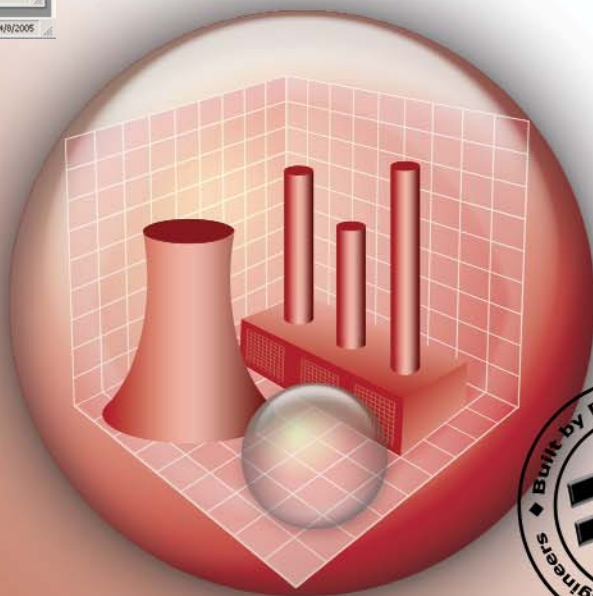
Selection Question	Criticality Factor	Yes	No
Safety	Could failure affect safety or have other hazardous consequences?	No	Yes
Detectability	Could failure be undetectable or not likely to be detected during normal operation?	Yes	No
Operational	Could failure have significant operational impact?	Yes	No
Economic	Could failure have significant economic impact?	No	Yes

Description	A	C	FEC	T
Provides Fire Zone 1 & 2 Fire detection/overheat signal to the airframe.				
Fails to provide Fire Zone 1 & 2 Fire detector/overheat signal to the airframe.			7	
Loss of fire detector/overheat signal from loop A or B. Alternative loop is still available.				
Loss of sensor pressure.			1	
Failure of responder.				
Engine fire detection wiring harness failure.			1	
Provides erroneous fire warning.				
Erroneous fire warning. Nuisance occurrence leading to engine shutdown.			6	
Fire detector, responder malfunction.				
Failure of engine wiring harness.				

#	Task Name	Status	Type	Assigned Interval	Cost per Update	Average Availability (%)
1	A scheduled replacement (discard) task to be considered or assigned the maintenance obligation.	Proposed	DS	18 Month	0.887 / Hour	99.637
2	A scheduled failure finding task to discover a hidden failure and initiate corrective maintenance, if applicable.	Rejected	FF	6 Month	0.895 / Hour	99.632
3	A scheduled on-condition task to detect a condition that indicates an approaching failure and, if so, to initiate preventive maintenance.	Recommended	OC	6 Month		
4	A scheduled repair (restoration) task to be considered or assigned the maintenance plan.	Proposed	RS	1 Year	0.926 / Hour	99.617

The software provides configurable Equipment Selection, Failure Effect Categorization and Maintenance Task Selection capabilities. Plus... RCM++ provides simulation-based calculations to compare the costs of various maintenance strategies and a calculator to estimate the optimum repair/replacement interval.

Full-featured and flexible FMEA/FMECA capabilities are also included!



ReliaSoft®



RCM++ facilitates analysis, data management and reporting for Reliability Centered Maintenance (RCM) analysis, integrated with full-featured FMEA/FMECA capabilities. Features include:

Support for Major Industry Standards: The software supports all of the major industry standards (such as ATA MSG-3, SAE JA1012 or NAVAIR 00-25-403 for RCM and SAE J1739, AIAG FMEA-3 and MIL-STD-1629A for FMEA/FMECA) with extensive capabilities to customize the interface and the reports to meet specific needs.

Equipment Selection: In order to focus resources where they can provide the greatest benefit, **RCM++** supports two configurable methods for selecting the equipment that will be analyzed with RCM techniques: Selection Questions (yes/no) and Criticality Factors (rating scales).

Failure Effect Categorization and Maintenance Task Selection Logic Charts: **RCM++** supports the Failure Effect Categorization (FEC) and Maintenance Task Selection logic diagrams in the major industry RCM standards and provides the ability to customize the questions and categories to meet specific application needs.

Optimum Maintenance Interval and Operational Cost Comparisons: **RCM++** goes beyond calculations based on MTBFs and the often-inappropriate assumption of an exponential failure distribution. Now, you can use the Weibull, exponential, normal, lognormal or mixed Weibull distributions to describe the equipment's failure behavior and then use the same powerful calculation and simulation engines that are available in ReliaSoft's **BlockSim** software to estimate the optimum maintenance interval and to compare the operational costs of various maintenance strategies.

Maintenance Task Packaging: **RCM++** makes it easy to group individual tasks into packages based on interval, labor crew, etc. Both manual and automated packaging options are available.

Reports, Charts and Queries: The software provides a complete set of print-ready reports for your analysis, which can be generated directly in Microsoft Word or Excel. The software also provides a variety of pareto (bar), pie and matrix charts to demonstrate the analysis information graphically, as well as a flexible query utility.

Full-Featured FMEA or FMECA: Full integration with ReliaSoft's **Xfmea** software enables **RCM++** to provide a complete set of FMEA/FMECA capabilities that can be used independently or integrated with the RCM analysis. This includes Risk Priority Numbers (RPNs) or Criticality Analysis, recommended action tracking, and much more.

Data Management: **RCM++** allows multiple users to work cooperatively on the analysis and provides numerous ways to leverage the lessons learned from previous analyses, including copy/paste, import/export, and more.

RCM++ provides integration with Xfmea, Weibull++, ALTA and BlockSim.



**Two configurable methods of equipment selection:
Selection Questions and Criticality Factors**



Configurable Failure Effect Categorization and Maintenance Task Selection logic diagrams



Use simulation to compare operating costs for different maintenance strategies

Maintenance Task Packaging

This window displays all non-linked tasks in the current project. Drag and drop a task to add or remove it from a maintenance package. Double-click a task or package to view/edit its properties. Use the menus to filter the display.

#	Task Name	Status	Type	Assigned Interval	Labor (Crew Name)	Total Duration per Incident	Total Cost per Incident	Cost per Uptime	Average Availability (%)
4 Month Maintenance									
1	Inspect ball joints and dust covers	Current	OC	4 Month	Skill Level I	0.25 Hour	12.25	0.01 / Hour	99.906
2	Inspect nuts and bolts on chassis and body	Current	OC	4 Month	Skill Level I	0.25 Hour	12.25	0.01 / Hour	99.906
4	Rotate tires	Current	S	4 Month	Skill Level II	1 Hour	100.00		
5	Change oil and check oil filter.	Current	S	4 Month	Skill Level I	0.25 Hour	27.25		
6	Inspect engine air filter	Current	OC	4 Month	Skill Level I	0.25 Hour	18.75		
8 Month Maintenance									
12 Month Maintenance									
24 Month Maintenance									
48 Month Maintenance									
72 Month Maintenance									

#	Task Name	Status	Type	Assigned Interval	Labor (Crew Name)
11	Inspect steering linkage and boots	Current	OC	4 Month	
13	Inspect drive shaft boots	Current	OC	4 Month	
20	Inspect radiator core and condenser	Current	OC	24 Month	
21	Inspect fuel lines and connections, fuel tank band and fuel tank vapor vent system	Current	OC	24 Month	

Edit Task

Task: PM Resources [User Defined]

Item Operating Time: 10000 Hour Item Downtime Rate: 100.00 / Hour

Materials (Spare Name/Part Number):
Spare part or other materials required to perform the task: [] Restoration Factor: 1

Labor (Crew Name):
The crew name, skill level or other information related to the task: []

Labor Rate: \$0.00 per hour

Task Duration:
Delay - Wait for Labor: []
Delay - Wait for Materials: []
Task Duration: 2

Total Duration per Incident: 2 Hour

Cost per Incident:
Misc. Cost: 0.00
Downtime Cost: 200.00
Labor Cost Per Incident: 25.00
Time Based Labor Cost: 100.00
Total Labor Cost: 125.00
Materials Cost: 75.00
Total Cost per Incident: 400.00

Cost per Uptime: 0.887 / Hour Total Operating Cost: 8,942.28 Average Availability (%): 99.637

Associated FMEA... Show Cause... Copy Copying... OK Cancel

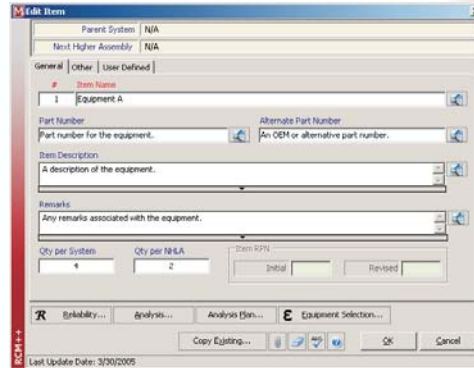
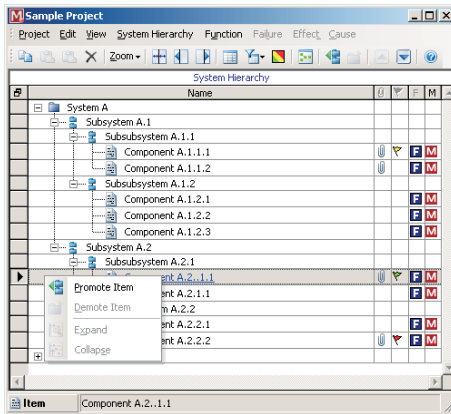
Last Update Date: 3/30/2005



Support for Large Multi-Level System Configurations

RCM++'s flexible System Hierarchy panel allows you to manage large multi-level system configurations with an unlimited number of levels and an unlimited number of items within each level. You can fully define the equipment properties (such as supplier, part number, expected operating environment, etc.) for each item and perform the analysis at any level within the system configuration.

Flexible capabilities to define the equipment that will be analyzed, including support for large, multi-level system configurations



To facilitate data entry, you can copy/paste sections of the configuration, import sections from another analysis, promote/demote branches of the hierarchy with the click of a button, and much more. The software also provides a simple Excel template for importing configuration data from an outside data source, such as a Bill of Materials (BOM) system.

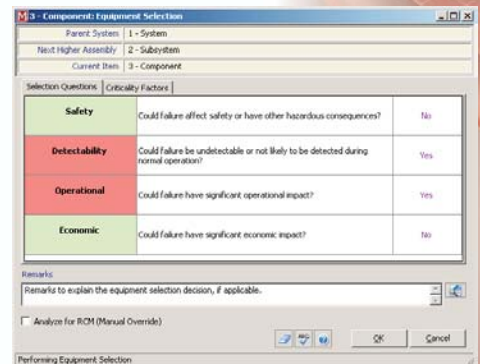
Two configurable methods of equipment selection: Selection Questions and Criticality Factors

Equipment Selection

In order to focus resources where they can provide the greatest benefit, **RCM++** supports two configurable methods for selecting the equipment that will be analyzed with Reliability Centered Maintenance (RCM) techniques: Selection Questions and Criticality Factors.

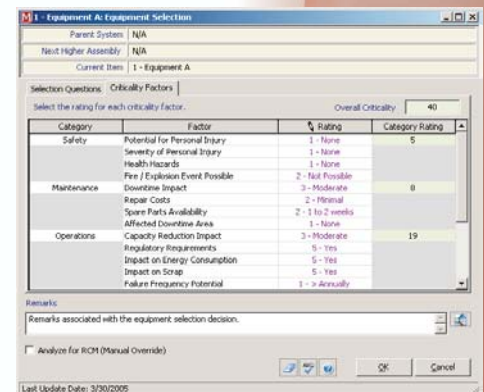
Selection Questions

The Selection Questions method provides a series of yes/no questions, where "Yes" indicates that the equipment should be considered for RCM analysis. **RCM++** is shipped with the questions in the major published guidelines (such as MSG-3, RAC, etc.) and allows you to customize the questions to meet particular needs.



Criticality Factors

The Criticality Factors method provides a set of factors contributing to equipment criticality that can be rated on a pre-defined scale (e.g. downtime, potential for injury, impact on scrap, etc.). The sum of all ratings can be used to compare and prioritize equipment. These factors and rating scales are also fully configurable to meet your specific analysis requirements.



Analysis Planning Utility

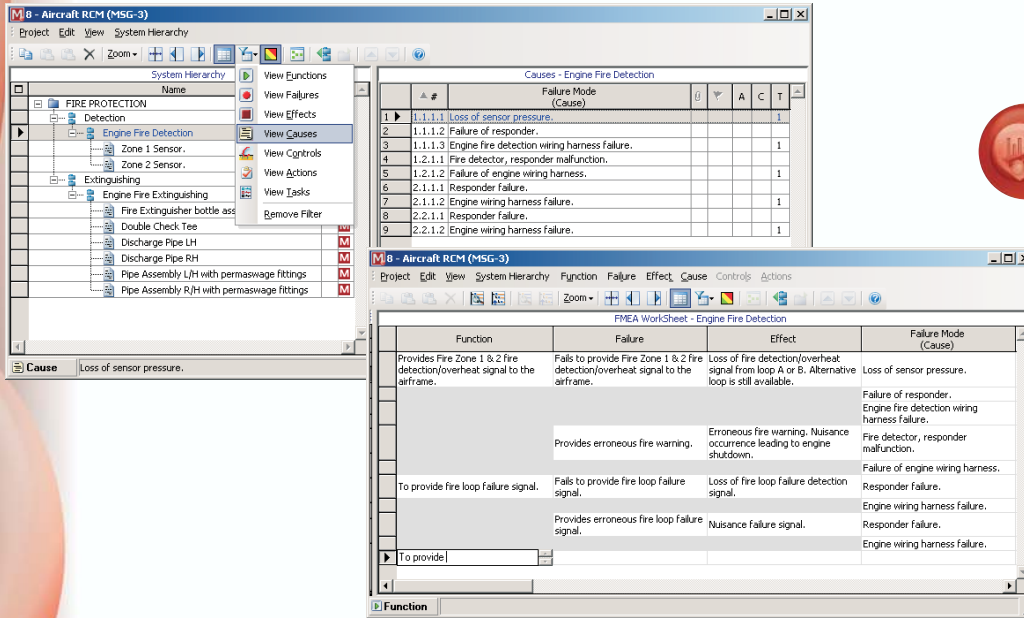
Once you have selected the equipment to be analyzed with RCM techniques, the Analysis Planning utility allows you to keep track of team members, ground rules and assumptions, estimated completion dates, scheduled work sessions and more for each analysis project.



Functional Failure Analysis

RCM++ makes it easy to define and view the functions that equipment is intended to perform, the ways that equipment may fail to perform its intended functions (functional failures), the effects of failure and the specific (actionable) causes of failure (also called failure modes). You can enter and view this information in the software's flexible hierarchical structure and/or tabular worksheet view. In addition, the Filtered View feature allows you to display sortable lists of Functions, Functional Failures, Effects, Causes, Controls, Actions and/or Maintenance Tasks at the click of a button.

Easy to define and view Functions, Functional Failures, Effects and Causes (Failure Modes)



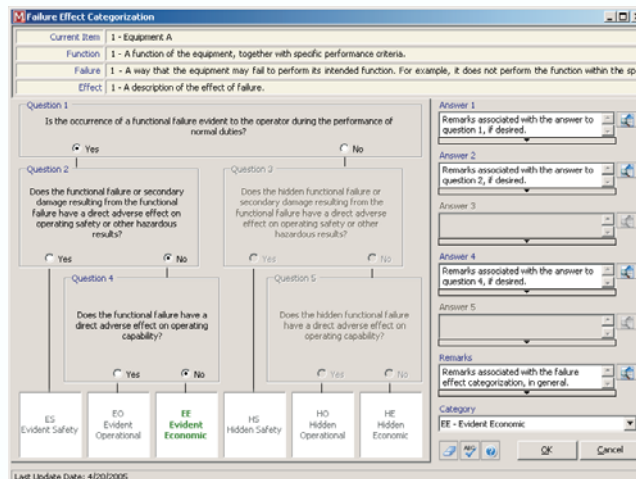
Supports the Failure Effect Categorization (FEC) logic diagrams in the major industry standards, including:

- MSG-3
- SAE JA1012
- RAC RCM
- NAVAIR
- and more!

Failure Effect Categorization

Most Reliability Centered Maintenance analysis approaches include an evaluation of the consequences of potential failures. **RCM++** supports the Failure Effect Categorization (FEC) logic charts in the major industry standards (such as MSG-3, SAE JA1012, RAC, NAVAIR, etc.) and provides the ability to customize the questions and categories to meet specific application needs. If desired, you can also enter an explanation for your answer to each categorization question in order to maintain a full record of the analysis team's efforts.

Ability to customize the Failure Effect Categorization (FEC) logic diagrams to meet specific needs





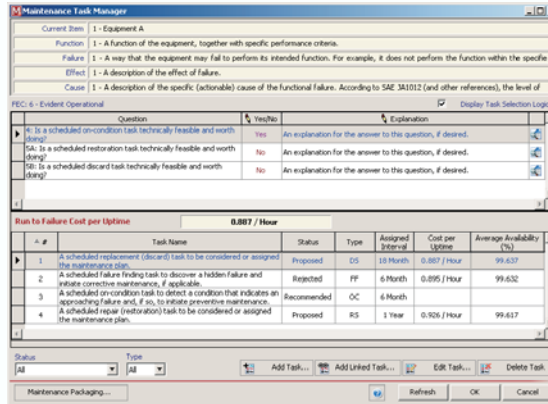
Many RCM analysis approaches use a pre-defined logic diagram to guide maintenance task selection. Others rely on cost comparisons, in addition to or instead of logic diagrams, to select the most effective maintenance strategy to address a particular issue. **RCM++** provides full support for both methods.

Maintenance Task Selection

RCM++ supports the Maintenance Task Selection logic in the major industry guidelines (such as MSG-3, SAE JA1012, RAC, NAVAIR, etc.) and provides the ability to customize the selection questions to meet specific requirements.

Supports the Maintenance Task Selection logic diagrams in the major industry standards, including:

- MSG-3
- SAE JA1012
- RAC RCM
- NAVAIR
- and more!



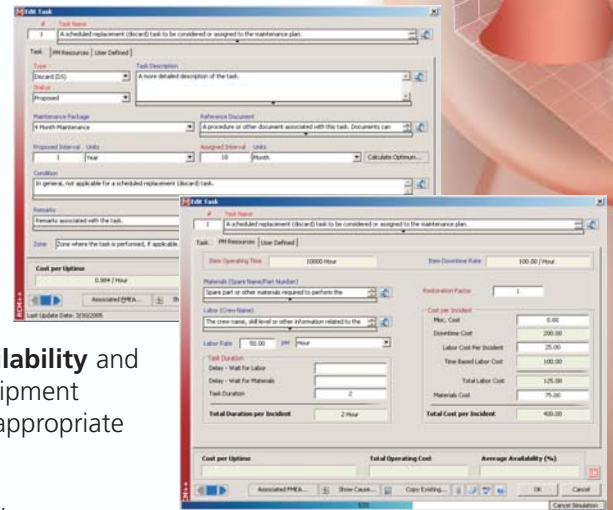
Optimum Task Interval and Cost Calculations

RCM++ goes beyond task cost calculations based on MTBFs and the often-inappropriate assumption of an exponential failure distribution. Now, you can use the Weibull, exponential, normal, lognormal or mixed Weibull distributions to describe the equipment's failure behavior and then use the same powerful calculation and simulation engines that are available in ReliaSoft's **BlockSim** system analysis software to compare the operational costs of various maintenance strategies. Cost calculations have been tailored to the specific requirements of the following maintenance strategies:

- Run to Failure
- Repair/Replacement
- Service
- Failure Finding Inspection
- On Condition Inspection

Compare the costs of various maintenance strategies based on estimates of:

- Cost per Uptime
- Average Availability
- Total Operating Cost



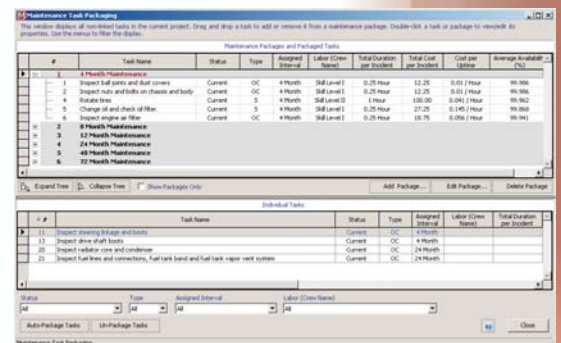
Estimates of **Cost per Uptime**, **Average Availability** and **Total Operating Cost** over the life of the equipment provide a valuable tool for selecting the most appropriate and cost-effective maintenance approach.

You can also use the **Optimum Interval** calculator to estimate the optimum schedule for repair/replacement tasks based on the cost of corrective maintenance, the cost of preventive maintenance and the probability of failure.

Optimum interval calculator for repair/replacement tasks

Task Packaging

RCM++ makes it easy to group individual tasks into packages based on interval, labor requirements, etc. You can manually assign a task to the appropriate maintenance package and/or allow the software to automatically group tasks based on the criteria that you have specified for each package.





Print-Ready Reports

RCM++ provides a complete set of reports for your Reliability Centered Maintenance analyses. Reports can be generated in Microsoft Word and/or Excel, which provides maximum flexibility for customization and the ability to create HTML and PDF versions of the reports, as desired. The available report

forms provide a comprehensive range of options to view and present your data, including:

- Equipment Selection
- Functional Failure Analysis
- Failure Effect Categorization (FEC)
- Maintenance Task Selection
- Task Summary
- Task Details
- Maintenance Packages
- And more...

Item	Task Name	Status	Type	Assigned Interval	Labor Hours	Total Cost per Incident	Average Annual Cost
1	In critical and replacement critical task to be completed or assigned for maintenance	Proposed	PS	10 Month	500 Labor Hrs	2.0000	10000.00
2	In scheduled and preventive task to be completed or assigned for maintenance	Proposed	PP	6 Month	500 Labor Hrs	5.2500	9000.00
3	In scheduled and preventive task to be completed or assigned for maintenance	Proposed	CC	6 Month	500 Labor Hrs	1.0000	10000.00
4	In scheduled and preventive task to be completed or assigned for maintenance	Proposed	PS	1 Year	500 Labor Hrs	2.0000	10000.00

Query Utilities to Extract Data and Generate Custom Reports

With **RCM++**'s flexible query utility, you can search for items, functions, failures, effects, causes, controls, actions and tasks based on any of their record properties. For example, you can easily search for all safety-critical issues (based on FEC), all maintenance tasks assigned to a particular labor crew, all maintenance tasks with costs above a specified limit, and so on...

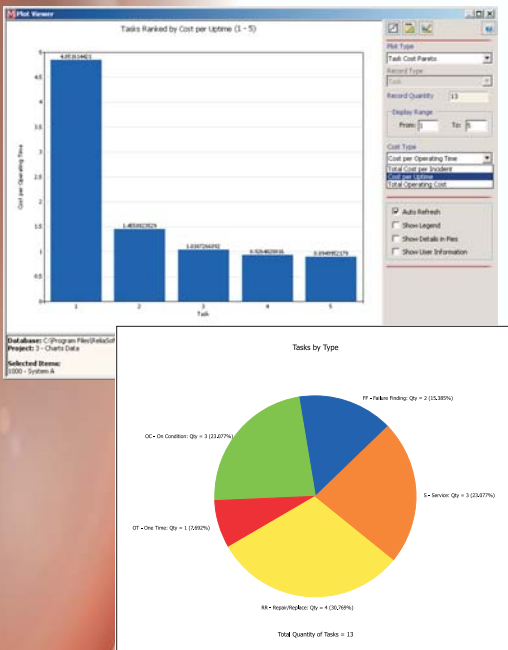
You can also choose which fields (columns) will be included in the query results and export results to Excel for further analysis. By saving and re-using existing queries, you can use this utility to build and manage your own ad hoc custom reports.

Graphical Charts

ReliaSoft's **RCM++** software also provides a complete array of charts for graphical presentation of your Reliability Centered Maintenance (RCM) analyses. Available charts include:

- Items by Equipment Selection Questions (pie chart)
- Items Ranked by Equipment Criticality (bar chart)
- Effects by Failure Effect Categorization (pie chart)
- Tasks by Type or Status (pie charts)
- Tasks Ranked by Cost per Incident (bar chart)
- Tasks Ranked by Cost per Uptime (bar chart)
- Tasks Ranked by Total Operating Cost (bar chart)

The Plot Viewer provides flexible options for you to view and manage charts for your analyses. You can select the data range and other user settings to determine the exact chart configuration to meet your specific needs. The Plot Setup allows you to fully customize the appearance of the plot. You can change the colors, fonts, titles and other chart properties to meet your specific display preferences. In addition, you can copy chart graphics as metafile graphics (*.wmf) that can be pasted into other document files, such as Microsoft Word, PowerPoint, etc.



Available print-ready reports include:

- Equipment Selection
- Functional Failure Analysis
- Effect Categorization
- Task Selection
- Task Summaries
- Task Details
- Maintenance Packages
- and more...

Flexible queries for customized data extraction and reporting

Available graphical charts include:

- Items by Equipment Selection
- Effects by FEC
- Tasks by Type or Status
- Tasks Ranked by Cost



Customize the interface and reports to meet specific needs

RCM++ provides many features designed to allow you to configure the software to meet your particular needs, to save time on data entry and to provide integration with other software.

Customization Options

RCM++ includes extensive capabilities to customize the interface and the reports to meet your specific analysis needs. This includes the ability to:

- Select and name the data fields you want to capture and display.
- Set the categories, priorities and other menus throughout the software.
- Configure the logic for Equipment Selection, Failure Effect Categorization and Maintenance Task Selection.
- Add your company logo to report output, create your own re-usable profiles, and more...



Re-use data from existing analyses via:

- Phrase Libraries
- Copy/Paste
- Import/Export

Phrase Libraries and Ability to Re-Use Existing Analysis Information

For consistency and to save effort, **RCM++** allows you to re-use descriptions from any existing analysis or to select phrases from pre-defined phrase libraries that are shipped with the software or that you have created. These lists can be sorted and filtered to help you find relevant descriptions.

The software's easy copy/paste functionality allows you to re-use sections from one analysis in another. In addition, you can easily import/export sections among different database files and to/from Excel spreadsheets.

Linked Actions and Linked Tasks allow you to assign the same action or task in multiple places within the analysis.

Flexible Capability for Links and Attachments

You can link or attach independent files to any record in your analysis. This makes it easy for you to keep related information (such as flowcharts, design drawings, reliability analysis files, procedure instructions, etc.) together with the full analysis. In addition, the Integrated Document feature allows you to attach a Word document to an item and include the entire document within the print-ready reports generated by the software.



Link or attach independent files to any record

Support for Team Effort and Revision Tracking

RCM++ has been designed to allow multiple users to work cooperatively on the analysis and provides simple techniques to share portions of an analysis with other users, including:

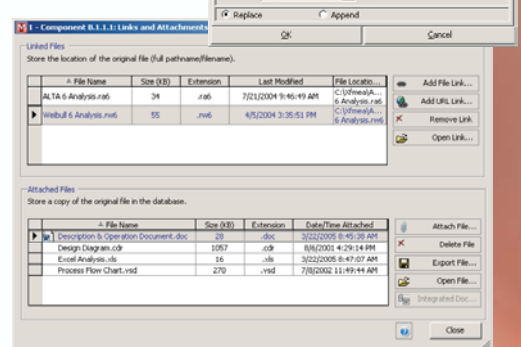
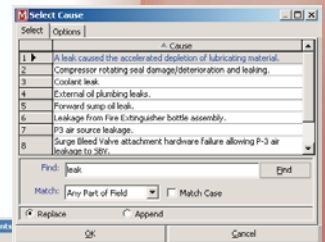
- In a networked environment, assign permissions to allow more than one authorized user to access the same database simultaneously.
- Seamlessly share portions of an analysis with another user via the software's import/export functionality.
- Easily distribute analysis reports, generated in Microsoft Word and/or Microsoft Excel, with the ability to convert to PDF and/or HTML.
- Revision tracking features include last update user and date/time stamp; database login history and baselines to "roll back" to previous versions.



Integration with ReliaSoft's Weibull++, ALTA and BlockSim

Integration with Weibull++, ALTA and BlockSim

RCM++ is integrated with ReliaSoft's **Weibull++** and **ALTA** software packages to allow you to obtain reliability distribution and parameter information from an existing data file. You can also export system configuration and reliability properties for more detailed system analysis with ReliaSoft's **BlockSim**.





Full integration with ReliaSoft's **Xfmea** software enables **RCM++** to provide a complete set of Failure Modes, Effects and Criticality Analysis (FMEA/FMECA) capabilities that can be used independently or integrated with the RCM analysis.

Risk Priority Numbers (RPNs)

RCM++ provides automatic RPN calculation for both initial and revised RPNs, with configurable rating scales for Severity, Occurrence and Detection. The software also calculates the percent reduction in RPN from initial to revised ratings, provides reports of issues ranked by RPN and generates a variety of graphical charts based on ratings and calculated RPNs.

Criticality Analysis Based on MIL-STD-1629A

RCM++'s Criticality Analysis utility supports both the Quantitative and Qualitative Criticality Analysis methods described in MIL-STD-1629A and generates a complete set of charts and reports, including the Criticality Matrix.

Close the Loop on Corrective Actions and Current Controls

ReliaSoft's **RCM++** software allows you to define and manage the current controls and recommended actions identified during the FMEA or FMECA. Actions management capabilities include the ability to:

- Fully define the recommended action including description, responsibility, due and completion dates, actions taken, estimated costs, etc.
- Organize actions by category and/or priority.
- Update the analysis with periodic action status reports.
- Send automated notification e-mails with the details of assigned actions.
- Track completion status through detailed reports and charts for assigned actions, sorted by due date, responsibility, completion status, etc.

Print-Ready FMEA/FMECA Reports, Graphical Charts and Queries

RCM++ provides a full set of print-ready reports, graphical charts and custom queries for your FMEA/FMECA analyses, including:

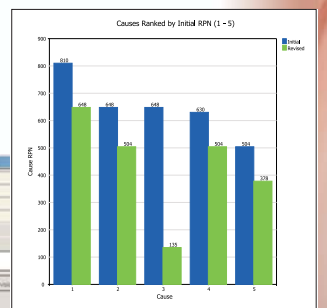
- FMEA/FMECA spreadsheet reports.
- Cause reports sorted by description, RPN, occurrence, detection, etc.
- Actions report sorted by due date, completion date, person responsible, etc.
- Custom queries to search for causes, actions and other records.
- Causes ranked by RPN or Severity x Occurrence in bar charts.
- Actions pie charts for status, category, priority, etc.
- Occurrence/Severity Matrix charts.
- And much, much more...

Supports all major FMEA/FMECA standards, including:

- SAE J1739
- AIAG FMEA-3
- MIL-STD-1629A

Plus extensive customization options to fit your own specific analysis requirements

Risk Priority Numbers (RPNs) or Criticality Analysis for risk assessment



Failure Mode	Potential Causes	Recommended Actions
Failure to start engine	Oil level low	Check oil level and top up
Engine stalls	Ignition switch failure	Replace ignition switch
Engine won't start	Battery low	Charge battery or replace

Edit Cause

Current Item: 1 - System A
 Function: 1 - Function 1
 Failure: 1 - Abrasion
 Effect: 2 - Endanger operator

Cause: [User Defined] [Probability] [Corrective Maintenance]

Cause: 1
 Description: Seperator alignment

Detection Method: [User Defined]

Action Details

Action: 1
 Description: Add laboratory accelerated corrosion testing

Person Responsible: [Name] [Last Name] [Company] [Phone] [Email]

Action Status: [User Defined]

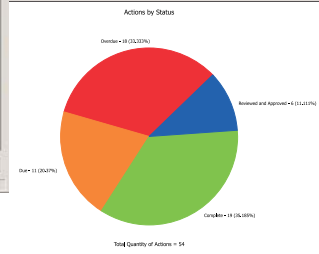
Action Category: [User Defined]

Action Priority: [User Defined]

Action Due Date: [Date]

Action Completion Date: [Date]

Costs: Estimated Cost: [Amount], Actual Cost: [Amount], Difference: [Amount]





Detailed user documentation in printed manual and on-line help files

Comprehensive Documentation

ReliaSoft's **RCM++** comes with complete and detailed printed product documentation and on-line help files, as well as a multitude of example files and guides designed to get you up and running the minute the application is installed.



Total Customer Support

ReliaSoft is totally committed to providing you with immediate support to answer any questions you might have and/or to assist you with any problems that may arise. Support options include free telephone, fax and e-mail support as well as free minor version product updates.

System Requirements

RCM++ is compiled and designed for Windows 2000, NT and XP and takes advantage of the features available in these platforms. Minimum system requirements: 433-MHz Intel Pentium-class processor, or an AMD Opteron, AMD Athlon64 or AMD Athlon XP processor, with 96MB RAM, SVGA display and at least 290MB of hard disk space. Microsoft Office 2000 or higher (Excel and Word) for automated report generation.



Free comprehensive technical support via phone, fax or e-mail

How much does ReliaSoft's RCM++ cost and how do I order it?

This information is available at <http://RCM.Reliasoft.com>. To order, use our on-line Web store, print-ready order form or contact ReliaSoft (1.888.886.0410 or +1.520.886.0410).

How quickly can I get RCM++?

ReliaSoft will process your order on the same business day that we receive it, with shipment via Federal Express (2nd Day or International). If requested, domestic orders can be shipped via FedEx Overnight so that you can have the package on your desk by the next business day. For faster access, we also offer the option of immediate software downloads via ReliaSoft's Web site.

Is RCM++ better than the package I am using now?

ABSOLUTELY. We invite you to try **RCM++** and compare it with any other package on the market. If you do not agree that the software is better than any competitor, just return the package within 30 days for a full refund.



Try a demonstration copy of RCM++ and decide for yourself!

What other reliability software is available from ReliaSoft?

ReliaSoft's reliability analysis software products have become the industry standard for complete reliability analysis and are used worldwide by most manufacturers with an active quality/reliability engineering program. Complete product details are available on the Web at <http://www.Reliasoft.com>.

- **Weibull++** for life data analysis
- **ALTA** for quantitative accelerated life testing (QALT) data analysis
- **BlockSim** for system reliability, maintainability, availability and related analyses using Reliability Block Diagrams (RBDs) or Fault Tree Analysis
- **RGA** for reliability growth analysis
- **MPC 3** for MSG-3 aircraft systems and powerplant analysis and reporting
- **Xfmea** for failure modes, effects and criticality analysis (FMEA/FMECA)
- **Lambda Predict** for standards based reliability prediction analysis
- **QTMS** for Failure Reporting, Analysis and Corrective Action (FRACAS)

ReliaSoft®



RCM++



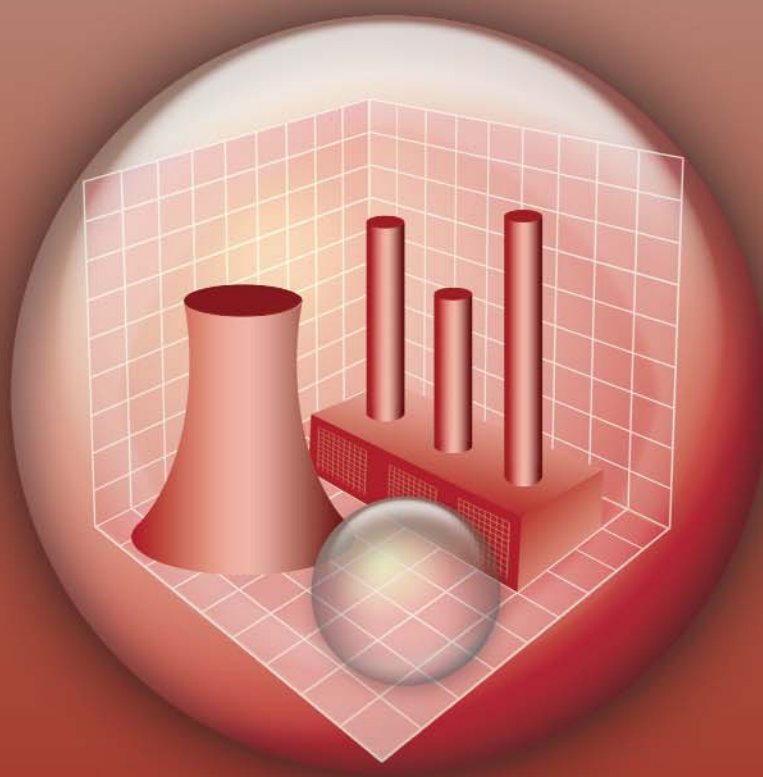
ReliaSoft Corporation
ReliaSoft Plaza, 115 South Sherwood Village Drive, Tucson, AZ 85710
Phone: +1.520.886.0410, Fax: +1.520.886.0399

<http://RCM.Reliasoft.com>

ReliaSoft



Reliability Office



ReliaSoft[®]

<http://www.Reliasoft.com>
<http://RCM.Reliasoft.com>